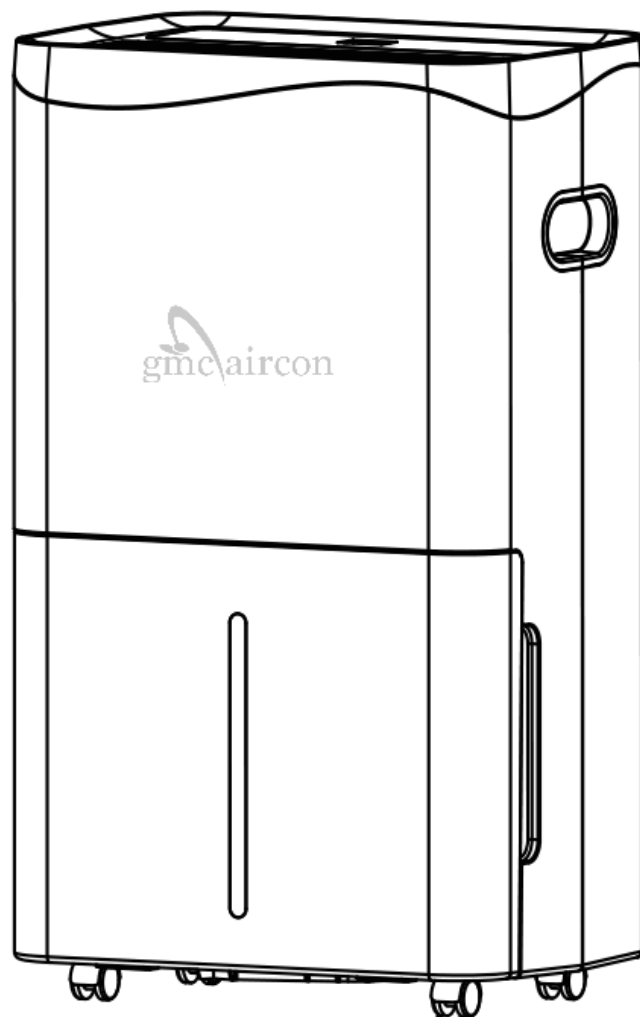




Dehumidifier

Instruction Manual



CONTENTS

| | |
|--|---------------------|
| COVER PAGE | 1 |
| CONTENTS | 2 |
| IMPORTANT NOTES..... | 3 |
| SAFETY INFORMATION | 4,5 |
| PARTS/PRODUCT OVERVIEW | 6,7 |
| OPERATING INSTRUCTIONS/WIFI | 8,9,10,11,12 |
| WATER TANK..... | 13 |
| DRAINAGE..... | 14 |
| MAINTENANCE/FILTERS..... | 15,16 |
| SPECIFICATIONS..... | 17 |
| FEATURES | 18 |
| TROUBLESHOOTING..... | 19,20 |
| DECOMMISSIONING | 21 |
| SERVICE AND WARRANTY | 22 |

IMPORTANT NOTES

Dear Customer

Your new GMCDH52- Dehumidifier has been manufactured in a state-of-the-art facility and has passed the strictest quality control procedures. Please read this manual carefully before using your appliance for the first time and then please store this manual in a safe place for future reference.

Thank you again for choosing GMC. If you have any issues at all with your product or any questions then the quickest route for resolution is to please contact us through our website www.gmcaircon.co.za or on 012-661-1173. We will be able to resolve any issues that may arise and our technical team is always on hand for assistance. We pride ourselves on 100% customer satisfaction and we trust you will enjoy your new product.

Record in the space below the listed information for future reference

Model No

Date of Purchase

Purchased From

PLEASE NOTE: Water drawn will depend on the environment being used. Approximately 50 Litres per day when optimal room temperature of 30°C and 80% Relative humidity. If used in less-than-ideal conditions it will draw water at a slower rate. This is not a product fault.

When first using the dehumidifier, operate the unit continuously for 24hrs, the humidity level can be set within a range of 80% RH (Relative Humidity) in 5% reduce or at CO for continuous operations. NOTE: If CO (Continuous) is selected, the dehumidifier will operate continuously at its maximum dehumidification settings if attached to a hose or drain or until the bucket is full.

For drier air, press the - pad and set to a lower percent value (%). For damper air, press the + pad and set to a higher percent value (%). When you first use the dehumidifier, set the humidity control to 45% or 50%, allow at least 24hrs for the dehumidifier to achieve the desired humidity level. If you still have damper air than desired, set the humidity level to a lower setting or select continuous for maximum dehumidification.

SAFETY INFORMATION



Do not attempt to maintain the appliance yourself. Only authorised agents are to carry out repairs.



Please read this manual carefully and fully understand before operating your dehumidifier.

OPERATIONAL PRECAUTIONS

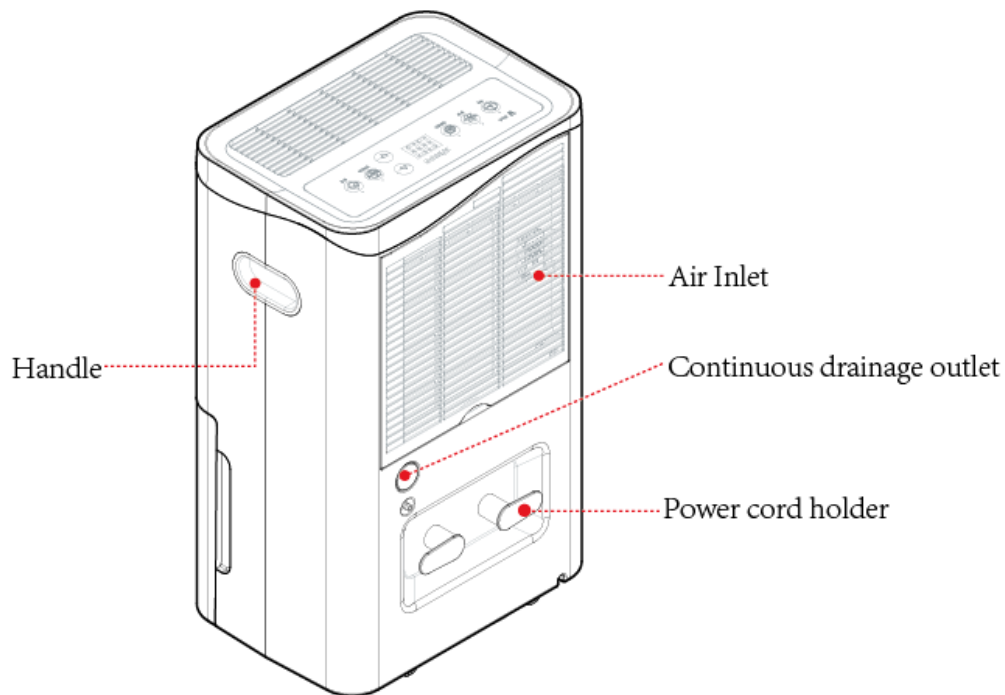
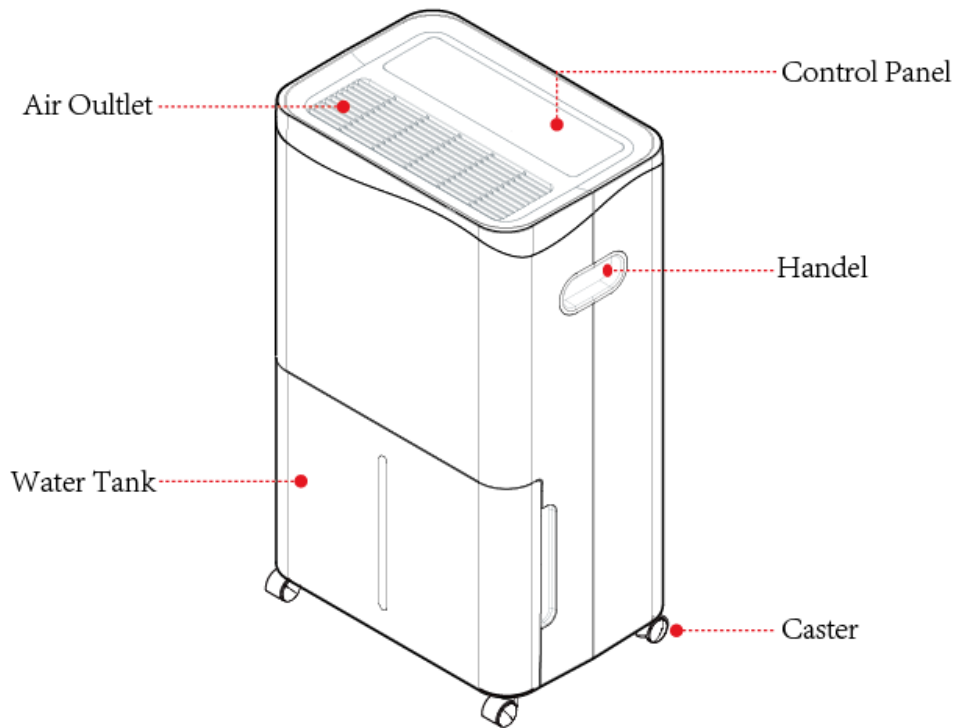
- The appliance must have 50cm Clearance around all sides.
- If the supply cord is damaged, it must be replaced by the manufacturer, its service agent or similarly qualified persons in order to avoid a hazard.
- Place the appliance on a flat, stable and dry surface and always keep the appliance in an upright position. Operating the appliance in any other position is a hazard.
- Do not place the appliance against a wall or other appliances.
- Do not cover or restrict the air flow inlet or exhaust grills
- Do not use mechanical devices to accelerate the appliances defrosting process.
- Do not place the continuous drainage hose outside when the temperature drops below 1°C
- To avoid circuit overload when using this appliance do not operate another high wattage appliance on the same electrical circuit.
- Always plug the appliance directly into a wall socket. Avoid using an extension lead where possible as they may overheat and cause a risk of an electrical fire.
- Do not operate the appliance with the water tank removed.
- Do not operate the appliance with any safety guards removed
- The appliance shall be disconnected from its power source during maintenance.
- Always operate the unit from a power source of equal voltage, frequency and rating as indicated on the product identification plate.
- Unplug the power cord when cleaning or when not in use.
- Do not operate with wet hands. Prevent water from spilling onto the unit.
- Do not immerse or expose the unit to rain, moisture or any other liquid.
- Do not leave the unit running unattended. Do not tilt or turn over the unit.
- Do not unplug while the unit is operating.
- Do not unplug by pulling on the power cord.
- Do not put objects on the unit.

- Do not climb or sit on the unit.
- Do not insert fingers or other objects into the air outlet.
- Do not touch the air inlet or the aluminum fins of the unit.
- Do not operate the unit if it is dropped, damaged or showing signs of product malfunction.
- Do not clean the appliance with any chemicals.
- Ensure the unit is far away from fire, inflammable, or explosive objects.
- The unit shall be installed in accordance with national wiring regulations.
- Do not use means to accelerate the defrosting process or to clean, other than those recommended by the manufacture.
- The appliance shall be stored in a room without continuously operation sources (for example: open flames, an operating gas appliance or an operating electric heater).
- The appliance shall be stored so as to prevent mechanical damage from occurring.
- The appliance shall be stored in a well-ventilated area where the room size corresponds to the room area as specified for operation.



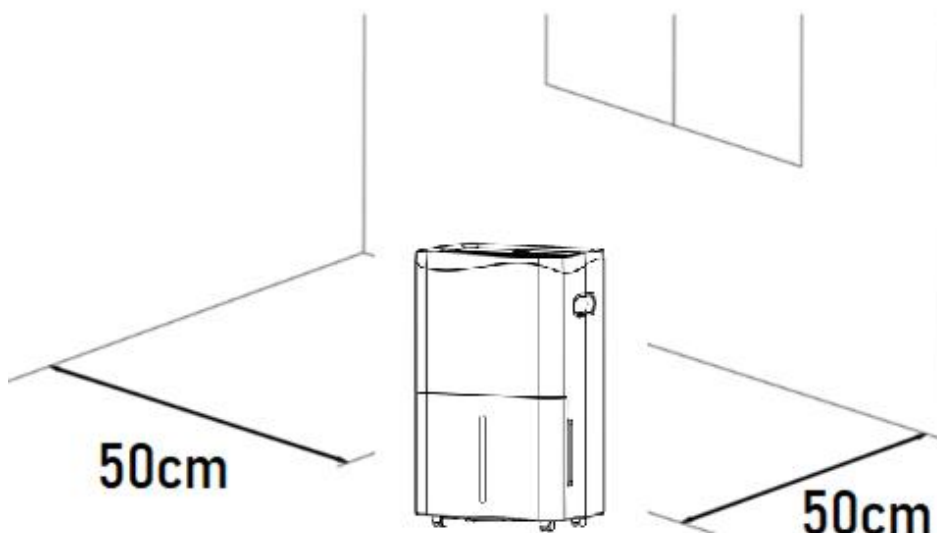
Servicing shall only be performed as recommended by the equipment manufacturer. Maintenance and repair requiring the assistance of other skilled personnel shall be carried out by the manufacturer. If you don't understand something or need help, please contact us on 012-661-1173 or www.gmcaircon.co.za

PRODUCT OVERVIEW/PARTS



PRODUCT INSTALLATION

- Place the unit on a firm, level surface in an area with at least 50cm of free space around it to allow for proper air circulation.
- Install the unit in rooms which exceed 6m²
- Never install the unit where it could be subject to heat sources such as radiators, heat registers, stoves or other products that produce heat.
- Do not place in an area where oil or water may be splashed
- Do not place in direct sunlight
- Do not place near mechanical vibration or shock
- Do not place near excessive dust
- Do not place on an uneven surface
- Do not operate in close proximity to walls, curtains, or other objects that may block inlet and outlet. Keep the air inlet and outlet free of obstacles.
- If tipped more than 45°, allow the unit to set upright for at least 24 hours before start up.
- Never install the unit where it could be subject to : Direct sunlight, Mechanical vibration or shock, Excessive dust
- Lack of ventilation such as cabinet or bookcase or uneven surfaces



NORMAL OPERATION

PLEASE NOTE: The operating duration depends on the surrounding environment. In drier areas, it may work slower, while in high-humidity conditions, it will draw water faster. The unit's performance is tailored to its environment, and it's been rigorously tested to perform as designed. Factors such as the humidity level, area size, and room temperature will all depend on how long it takes to draw out the correct moisture.

The rate at which water is collected in the tank depends on factors such as room temperature, the size of the room, and the source of humidity. It is a known fact that at low room temperature, the extraction rate is also low. The higher the humidity, the better the result.

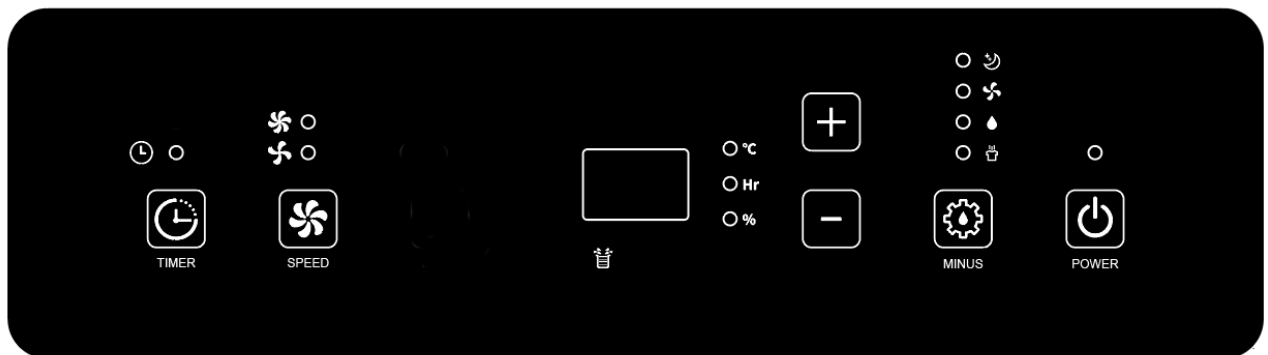
If the unit is not drawing water or at a slow rate it's highly likely that the environment it is being used is not humid enough for the product to draw water.

This is not a product fault. If you are unsure or have any questions at all please do not hesitate to get in touch with one of the GMC technical team on 012-661-1173 or www.gmcaircon.co.za

The below are normal when operating the dehumidifier.

| | |
|---|---|
| <i>Operation stops occasionally</i> | The unit is defrosting |
| <i>Dehumidified volume is small</i> | Dehumidifier volume is less when the room temperature is low, The unit stops operating when the room temperature is below approx. 5°C. The unit stops dehumidifying because the humidity in a room drops to the set humidity in "Normal dehumidifying" mode. |
| <i>The humidity in a room is still high</i> | The room size may be too large. The recommended room size 60m ² The doors or other windows of the room may be opened and/or closed frequently. The dehumidifier is used together with a kerosene heater which emits vapor. |
| <i>Bad smell during operation</i> | Smell is emitted from the walls, furniture or other objects. |
| <i>Sound is produced with in the unit</i> | Circulation of the refrigerant may cause sound until it is stable. |
| <i>The buzzer sounds</i> | The buzzer sounds when the water tank is full of water. |
| | |

OPERATING INSTRUCTIONS



Power:



POWER

After switching on the power, all the indicators and the screen will be on for 1 second and then off. The power indicator will remain on, and the machine will enter standby mode. Pressing this button again will stop the machine from running, and the power indicator will turn off.

Modes:



MODE

Press this button, and you can choose different modes.

The unit has Sleep mode, Fan mode, Auto dehumidifying mode, and continuously dry mode.

● **Auto dehumidifying mode:** When you first turn on the unit, it will enter auto dehumidifying mode, or you can press the mode key to select this mode.

When ambient humidity is greater than the set humidity by 3%, the fan and compressor start working as set.

When ambient humidity is less than the set humidity minus 3%, the compressor stops working, and the fan stops working after a 30-second delay.

Both fan speed and humidity can be adjusted under auto dehumidifying mode.

After setting the humidity, the LED returns to displaying the ambient humidity.

● Continuously drying mode: The machine continues to run, unaffected by ambient humidity.

The fan speed can be adjusted, and the digital screen displays the ambient humidity.

● Fan mode: Press the mode key to select fan mode.

The compressor is not working, and the fan speed can be adjusted.

In fan mode, the set humidity cannot be adjusted, and the digital screen displays the ambient temperature.

● Sleep mode: Press the mode key to select sleep mode.

In sleep mode, if there is no operation for 10 seconds, the power indicator and sleep indicator gradually dim, and other indicators and the digital screen turn off.

Pressing any button will restore normal display.

Other functions are the same as in auto dehumidifying mode.

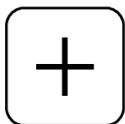
Fan Speed Adjust



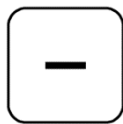
SPEED

Press this button to switch between high and low fan speed.

Humidity Adjust



ADD



DOWN

Adjust the set humidity (30-80%) or timer (0-24h)

Intelligent Defrosting:

Intelligent defrosting: When the defrosting signal is detected, the defrosting starts, and the mode indicator flashes. If the digital screen blinks and displays E1, the compressor will run for a total of 30 minutes, then defrost for 10 minutes.

Timer Mode



TIMER

Pressing this button allows you to set or cancel the timer.

In the non-timing state: Press the "timer" button to enter the timing setting state, and the digital display will flash, indicating the timing time. During the blinking period, press the up or down key to adjust the timing time (0 to 24 hours).

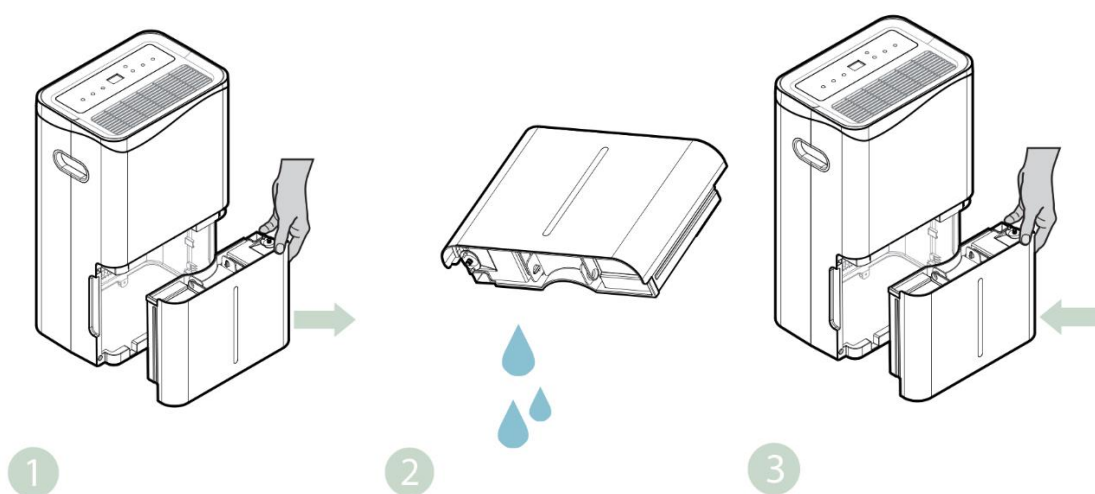
In the timing state: Press the "timer" button to check the timing and the remaining time will blink on the display. Press the "timer" button again during the blinking period to cancel the timing.

In the running state, set the time to turn off the machine; in the standby state, set the time to turn on the machine.

WATER TANK INSTRUCTIONS

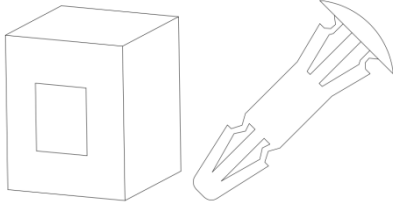
The water tank built into the unit will fill up and shut the unit down once it is full. It will run again once you empty the water tank and reinstall it properly.

- When the tank is full, the unit will turn off and emit a buzzing sound, the “Water Full” light will turn on, and the digital screen will display "FL".
- Press the POWER button to turn off the unit.
- Pull the water tank and simply slide it out of the body of the dehumidifier.
- Empty the water into an area with a drain or outside.
- Clean the inside and outside of the tank.
- Replace the empty tank back into the unit.
- Press the POWER button to resume operation.
- If the Water Full light does not turn off, check that the float is correctly in place

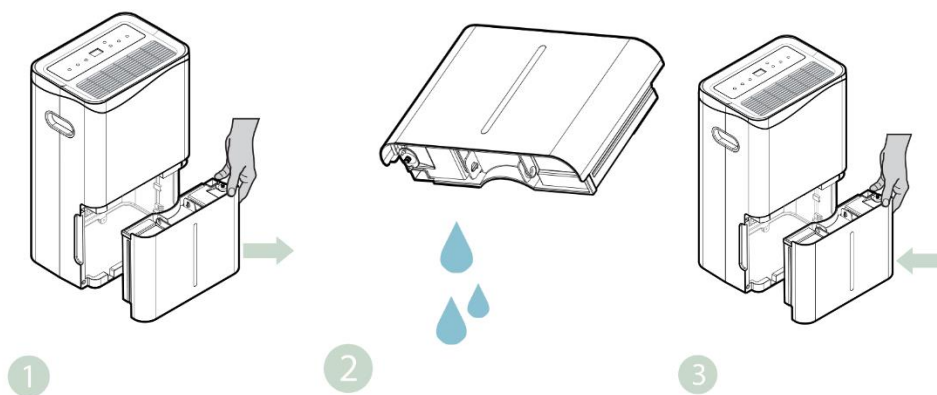


WARNING

1. Do not discard the water tank magnets and plastic rivets. Otherwise, the machine will not automatically stop working when the water tank is full, and the condensed water will overflow, potentially damaging the room's floor.



2. Please ensure to clean the condensed water in the water tank before resetting the working mode of the machine.
3. If the water tank is dirty, rinse it with clean water. Avoid using detergents, steel balls, chemical dust removers, diesel oil, benzene, diluents, or other solvents, as they may damage the water tank and cause leaks.
4. Replace the empty tank back into the unit. Otherwise, the water full indicator may remain red, and the machine cannot restart.

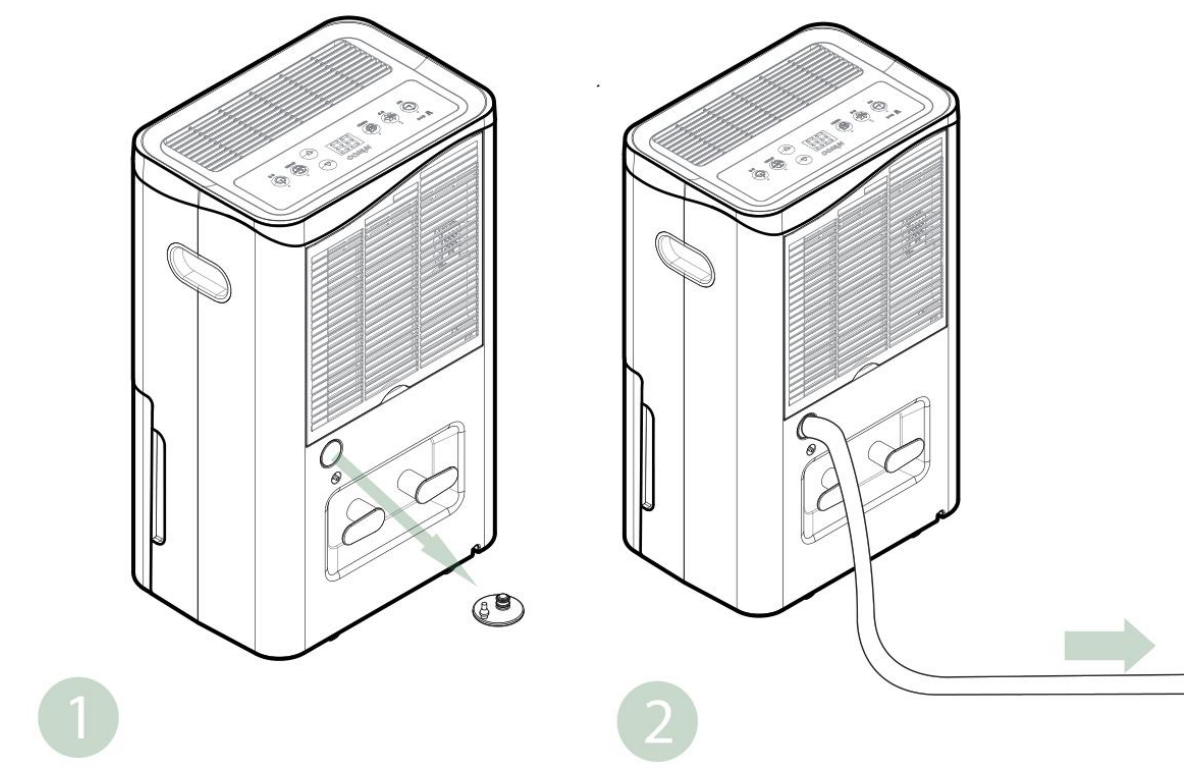


CONTINUOUS DRAINAGE

For continuous operation or unattended dehumidification, please connect the attached drain hose to the unit. Condensate water can automatically flow into a bucket or drain by gravity.

Straighten the drainage pipe.

Insert one end of the drain into the cistern hole and connect the other end to the bathroom, outdoor or a bucket-like container, or the prescribed drainage area.



Warning

1. Please do not block the drain or drain pipe. If the phenomenon of blocking occurs, condensed water will flow into the water tank.
2. Please do not bend the drain pipe. The height of the drain pipe should be lower than the outlet.
3. The drain pipe shall be securely connected to the outlet.

MAINTENANCE

Proper maintenance and care are essential for ensuring optimal performance and longevity of your dehumidifier. Regularly clean the filters, inspect for any debris, and follow the recommended maintenance schedule outlined in this manual. By adhering to these guidelines, you'll enhance the efficiency and lifespan of your equipment, providing you with reliable and effective operation for years to come.



Warning

To avoid of the risk of electric shock, never connect and disconnect the plug with your hands wet.



Prohibit wet hand



Caution

Turn off the unit and disconnect the power plug before cleaning or other routine maintenance



Prohibit

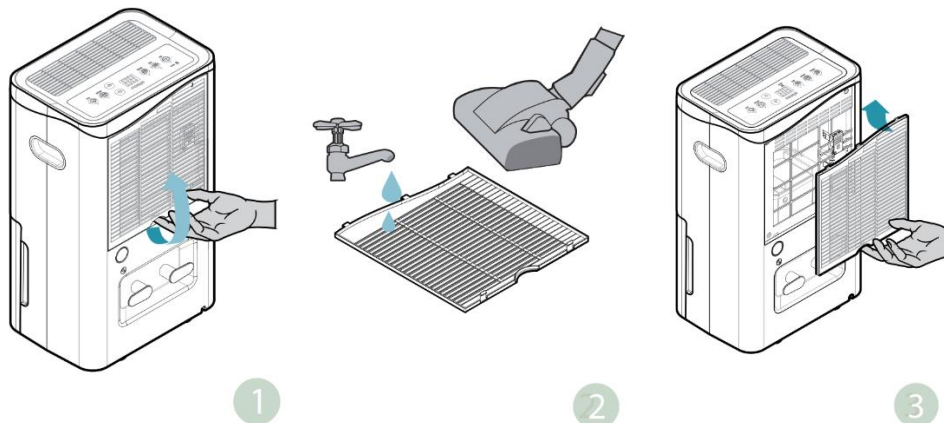
Do not remove the float lever from the water tank.

Air Intake Cleaning (Every 2 weeks)

Dust collects on the filter and restricts airflow. The restricted airflow reduces the efficiency of the system, and if it becomes blocked, it can cause damage to the unit.

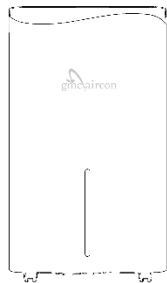
The air filter requires regular cleaning and is removable for easy cleaning. Do not operate the unit without an air filter, or the evaporator may become contaminated.

1. Pull out the filter from the bottom of the rear shell.
2. Use a vacuum cleaner to gently remove the dust from the surface. If the filter is very dirty, wash it with water and a soft detergent, and dry it thoroughly afterward.
3. Put the filter back.



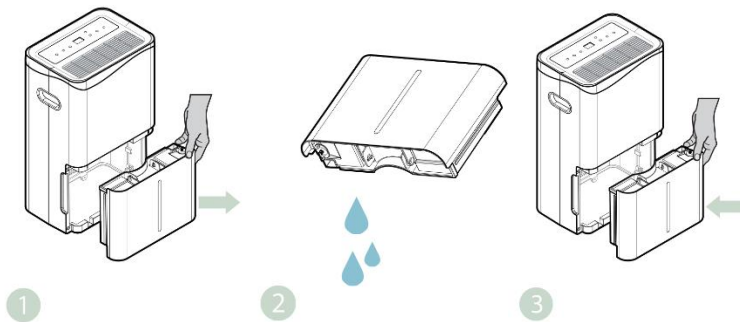
Housing Cleaning

1. Housing



1. To avoid malfunction or abnormal sounds, keep the unit upright.
2. Wipe the dehumidifier with a dry and soft cloth.
3. For removing heavy dirt, wipe it with a cloth wrung tightly. (Never use a wet cloth for cleaning the controls.)
4. To prevent deformation or cracking, do not use benzine, thinner, or liquid cleaners.
5. Chemical cloths may cause a change in color or damage to the unit

2. Water Tank Cleaning



Important: The Water Tank Cover is detachable for cleaning purposes only.

1. Turn off the dehumidifier and unplug it before removing the water tank.
2. Remove the water tank:
3. Wash the inside of the tank with water (Do not scratch).
4. Do not remove the float from the water tank.
5. Never use strong chemicals, oil-based products, detergents, chemically treated cloths, or other cleaning solutions, as these could damage the water tank.

SPECIFICATIONS

| | |
|---------------------------------|------------------------------------|
| Model Number | GMCDH52 |
| Auto-stop function | Yes |
| Capacity | 50L/day (30°C, 80% RH) |
| Cooling element | Compressor |
| Color | White/Black |
| Compressor Type | Rotary |
| Coverage Area | 40m ² |
| Minimum Room Size | 12m ² (Floor area) |
| Decibel Rating | <50dBA |
| Minimum working environment | Temperature: 5°C |
| Optimum working environment | Temperature: 30°C Humidity: 80% |
| Maximum Refrigerant Charge | R290/230g |
| Power Supply | AC220-240V/50Hz |
| Power Consumption (30°C ,80%RH) | 793W |
| Packed Dimensions | 42cm (L) X (W) 31cm X 66cm (H) |
| Timer | Yes |
| Unpacked Dimensions | 36cm (L) X 25cm (W) x 62cm (H) |
| Water Tank Capacity | 5.0 L |
| Weight (Packed) | 20Kg |
| Weight (Unpacked) | 19Kg |

FEATURES

- Auto defrosting function
- Automatic Bucket Full Shut-Off
- Automatic Restart (humidity controller compatible)
- Caster wheels for easy mobility and storage
- Child Lock Feature
- Continuous draining option
- Continuous dehumidifying mode
- Digital humidistat control
- Low decibel output
- Overload Protection
- Programmable Humidity setting
- Removes up to 50L per day
- Timed operation
- Water Full Indicator

TROUBLESHOOTING

The rate at which water is collected in the tank depends on factors such as room temperature, the size of the room, and the source of humidity. It is a known fact that at low room temperature, the extraction rate is also low. The higher the humidity, the better the result. This is not a product fault.

$5^{\circ}\text{C} \leq \text{Ambient Temp.} \leq 35^{\circ}\text{C}$. When the ambient temperature is lower or higher than the operating temperature, the dehumidifier stops. When $5^{\circ}\text{C} \leq \text{Ambient temp.} \leq 16^{\circ}\text{C}$, the compressor automatically defrosts at intervals; during defrosting, the compressor stops, and the fan keeps running.

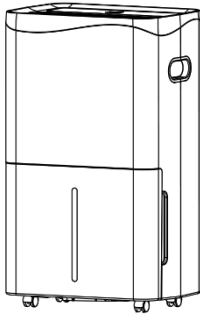
| Problem | Possible Cause | Solution |
|-------------------------|---|---|
| Not working | No power supply | Connect to a functioning outlet and switch on |
| | Water Full Indication Flashes | Drain water tank and reset it, or re-position the water tank to right place |
| | Room temperature $< 5^{\circ}\text{C}$, or $> 35^{\circ}\text{C}$ | Self-Protection designed to protect the unit. Can not work under such temperature |
| Bad functioning | Is the air filter clogged? | Clean the air filter as instructed |
| | Is the intake duct or discharge duct obstructed? | Remove the obstruction from the discharge duct or intake duct. |
| No air intake | Is the filter clogged? | Wash the filter |
| Loud noise when running | Is the machine put in the plat place? | Put the machine on the plat ground |
| | Is the filter clogged? | Wash the filter |
| E1 | Humidity sensor problem | Change a sensor |
| LO | Environmental humidity is below 20% | The dehumidifier shuts down for self-protection |
| HI | Environmental humidity is above 90% | |
| CL | Low temperature protection, the environmental temperature $< 5^{\circ}\text{C}$ | |
| CH | High temperature protection, the environmental temperature $> 38^{\circ}\text{C}$ | |

Please note that the following below are normal operational procedures for the dehumidifier

| | |
|--|---|
| <i>Operation stops occasionally</i> | The unit is defrosting |
| <i>Dehumidified volume is small</i> | Dehumidifier volume is less when the room temperature is low. The unit stops operating when the room temperature is below approx. 5°C. The unit stops dehumidifying because the humidity in a room drops to set humidity in "Normal dehumidifying" mode. |
| <i>The humidity in a room is still high</i> | The room size may be too large. The recommended room size for the GMCDH52 is 40m ² The doors or windows of the room may be opened and/or closed frequently. The dehumidifier is used together with a kerosene heater which emits vapor. |
| <i>Bad smell during operation</i> | Smell is emitted from the walls, furniture or other objects. |
| <i>Sound is produced with in the unit</i> | Circulation of the refrigerant may cause sound until it is stable. |
| <i>The buzzer sounds</i> | The buzzer sounds when the water tank is full of water. |
| | |

DECOMMISSIONING

Long-term storage - If you will not be using the unit for an extended period of time
ATTENTION: The evaporator inside the machine must be dried out before the unit is packed to avoid component damage and Mold growth. Unplug the unit and place it in a dry, open area for several days to dry it out. Alternatively, set the humidity point more than 5% higher than the ambient humidity to force the fan to dry the evaporator for a couple of hours.



Please store the unit per the following steps:

1. Press power button to switch off and unplug the unit.
2. Drain the remaining water from the unit.
3. Clean the filter and let the filter dry completely in a shaded area.
4. Collect the power cord at the water tank.
5. Re-install the filter at its position.
6. The unit must be kept in upright position when in storage.
7. Preserving the machine in ventilating, dry, non- corrosive gas and safe place indoor.

Releasing refrigerant into the atmosphere is strictly forbidden!



Do not dispose of electrical appliances as unsorted municipal waste; use separate collection facilities. Contact your local government for information regarding available collection systems. If electrical appliances are disposed of in landfills or dumps, hazardous substances can leak into the groundwater and enter the food chain, damaging your health and well-being.

SERVICE AND WARRANTY

GMC Airconditioning PTY (Ltd) was established in 1995 and is one of South Africa's leading cooling and heating companies. We pride ourselves on 100% customer satisfaction and have the highest online rating of all heating and cooling companies in South Africa. We will strive to ensure you are 100% satisfied with your product.

In the rare case of encountering any issues with your product or would like some support please contact us directly on 012-661-1173 or www.gmcaircon.co.za as this will allow us to react quickly to your request. If you have bought this product from one of our partner platforms, then contacting us directly will allow us to resolve the issue for you in a timelier fashion. We are here to help you and ensure you are 100% satisfied.

Please read this instruction manual carefully before setting up or using this product. If you believe this product to be suffering from a manufacturing fault, or if you have any inquiries about this product, please contact our customer support.

CUSTOMER SUPPORT

GMC Airconditioning PTY (Ltd)

35 Sarel Baard Crescent

Gateway Industrial Park

Centurion

0046

Telephone: +27 (12) 661-1173

Website: www.gmcaircon.co.za

Email: info@gmcaircon.com

When contacting our customer support, please have the information below available. All warranty requests must be accompanied by a proof of purchase, which is a copy of the original receipt.

Model:

Date of purchase:

Purchased from: