



AIR PURIFIER
USER MANUAL
MODEL: GMC500AP



TABLE OF CONTENTS

IMPORTANT NOTES	3
SAFETY INFORMATION	4,5
SPECIFICATIONS.....	6
FEATURES	7
PRODUCT INTRODUCTION	8
CONTROL PANEL	9
OPERATIONS	10,11,12,13
WIFI	14,15
MAINTENANCE/CLEANING	16
TROUBLESHOOTING	17,18
SERVICE AND WARRANTY	19

IMPORTANT NOTES

Dear Customer

Your new GMC Air Purifier has been manufactured in a state-of-the-art facility and has passed the strictest quality control procedures. Please read this manual carefully before using your appliance for the first time and then please store this manual in a safe place for future reference.

Thank you again for choosing GMC. If you have any issues at all with your product or any questions then the quickest route for resolution is to please contact us through our website www.gmcaircon.co.za or on 012-661-1173. We will be able to resolve any issues that may arise and our technical team is always on hand for assistance. We pride ourselves on 100% customer satisfaction and we trust you will enjoy your new product.

Record in the space below the listed information for future reference.

SERIAL NUMBER.....

DATE OF PURCHASE.....

PURCHASED FROM.....

.....



Do not attempt to maintain the appliance yourself. Only authorised agents are to carry out repairs.

Important Safety Information

Safety

Read this user manual carefully before you use the appliance, and save it for future reference.

Danger

Do not clean the appliance with water, any other liquid, or a (flammable) detergent to avoid electric shock and/or a fire hazard.

Do not spray any flammable materials such as insecticides or fragrance around the appliance.

Warning

Check if the voltage indicated on the appliance corresponds to the local power voltage before you connect the appliance.

If the power cord is damaged, you must have it replaced by a GMC technician. Please contact us on 012-661-1173 or www.gmcaircon.com

Do not use the appliance if the adaptor, the power cord, or the appliance itself is damaged.

Only use the approved adapter provided with the appliance.

This appliance can be used by children aged from 8 years and above and persons with reduced physical, sensory or mental capabilities or lack of experience and knowledge if they have been given supervision or instruction concerning use of the appliance in a safe way and understand the hazards involved.

Children shall not play with the appliance.

Do not block the air inlet and outlet.

Do not place any items on top of the air outlet, or in front of the air inlet.

Make sure that foreign objects do not fall into the appliance through the air outlet.

Caution

This appliance is not a substitute for proper ventilation, regular vacuum cleaning, or use of an extractor hood or fan while cooking.

Always place and use the appliance on a dry, stable, level, and horizontal surface.

Leave at least 20cm free space around the appliance and leave at least 30cm free space above the appliance.

Do not sit or stand on the appliance.

Do not place anything on top of the appliance.

Do not place the appliance directly below an air conditioner to prevent condensation from dripping onto the appliance.

Only use the original GMC filters specially intended for this appliance. Do not use any other filters.

Combustion of the filter may cause irreversible human hazard and/ or jeopardize other lives.

Do not use the filter as fuel or for similar purpose.

Avoid knocking against the appliance (the air inlet and outlet in particular) with hard objects.

Do not insert your fingers or objects into the air outlet or the air inlet to prevent physical injury or malfunctioning of the appliance.

Do not use this appliance when you have used indoor smoke-type insect repellents or in places with oily residues, burning incense, or chemical fumes.

Do not use the appliance near gas appliances, heating devices or fireplaces.

Always turn off the air purifier first, then unplug adapter from wall outlet, when you want to moving, cleaning appliance, replacing the filters or carry out other maintenance.

The appliance is only intended for household use under normal operating conditions.

Do not use the appliance in wet surroundings or in surroundings with high ambient temperatures, such as the bathroom, toilet, or kitchen, or in a room with major temperature changes.

The appliance does not remove carbon monoxide (CO) or radon (Rn).It cannot be used as a safety device in case of accidents with combustion processes and hazardous chemicals.

SPECIFICATIONS

Model	GMC500AP
Voltage	220V
Power Consumption	60W
CADR	500m ³ /h
Weight	10.04kg
Dimension	400(L)x260(W)x640(H)mm
Noise (Sleep mode)	≤30dB(A)

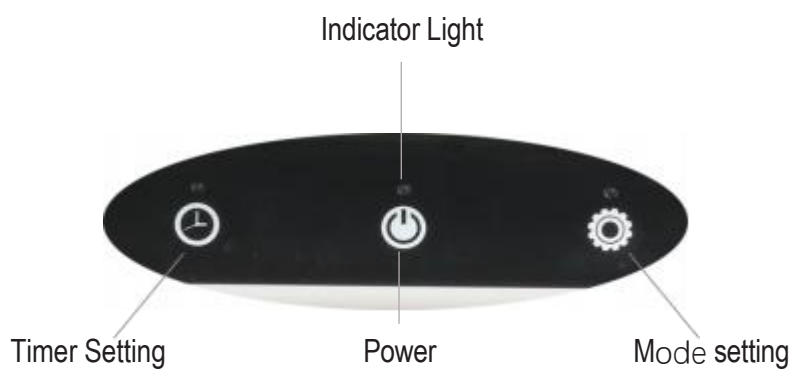
FEATURES

- 4 In 1 Filter
- 8hrs Timer
- ANION
- Auto Mode
- Child Lock
- Dual Sensor
- Filter Replacement Reminder
- H13 HEPA Filter
- PM2.5 Data Indicator
- Sleep Mode
- UV Lamp
- WIFI Control

PRODUCT INTRODUCTION

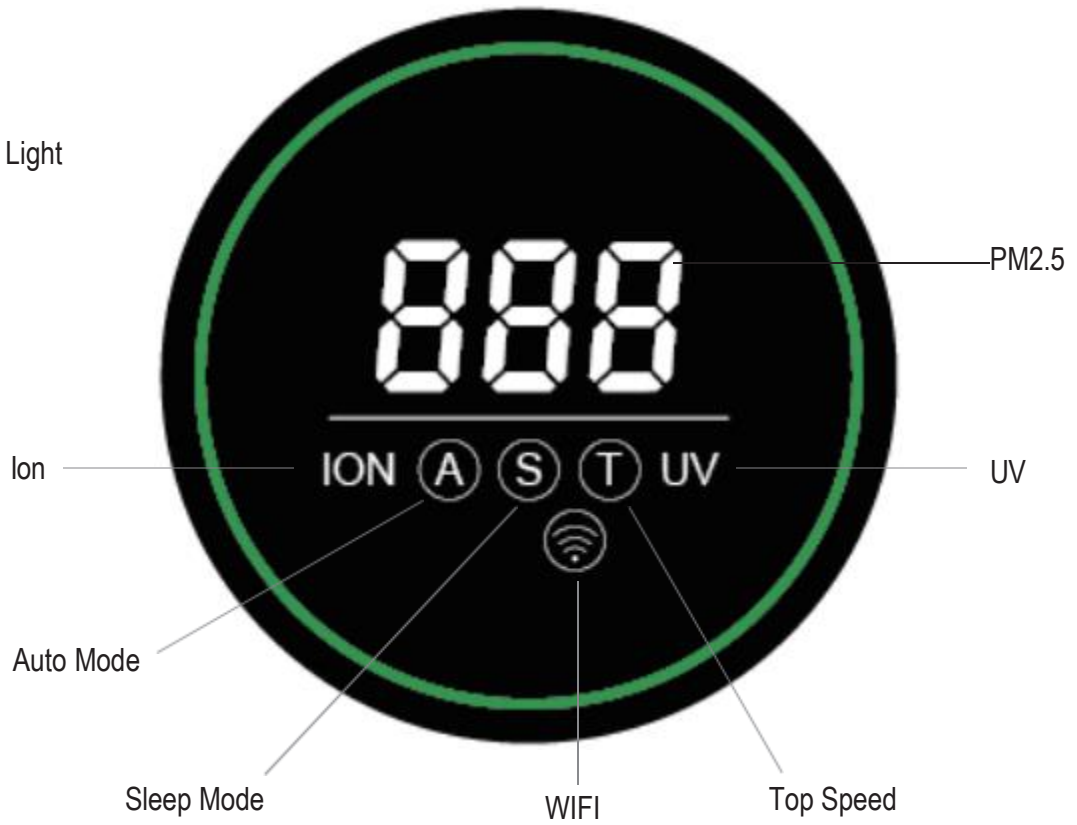


Description-Fig. 1

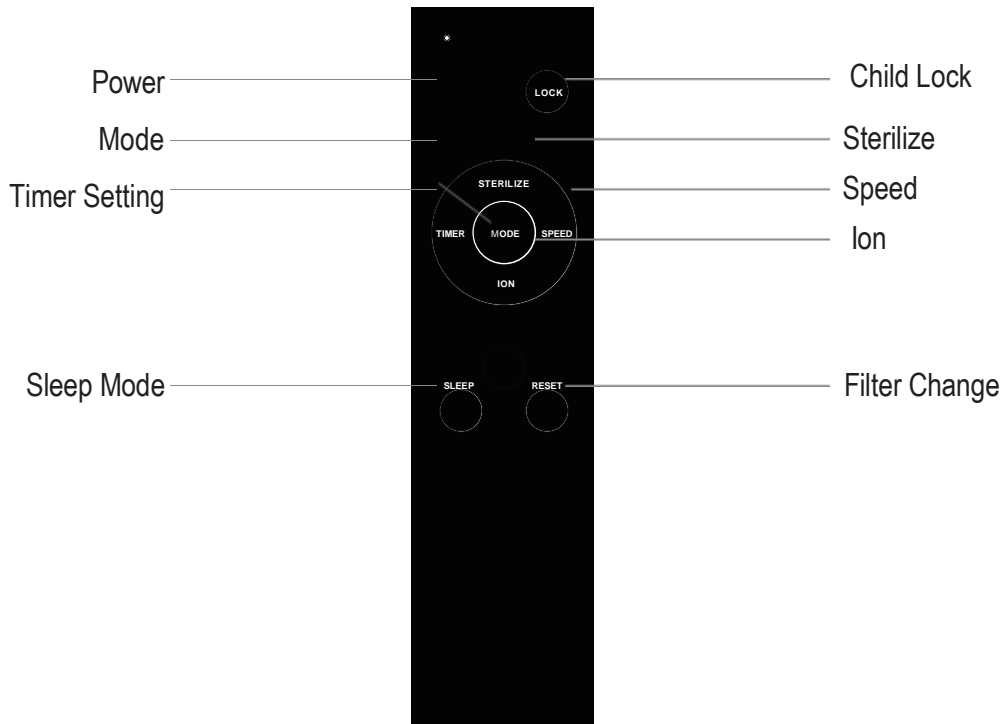


Description-Fig. 2

Air Quality Indicator Light



Description-Fig. 3



Description-Fig. 4

FILTER CHECK

N.B. Please ensure you remove the plastic covering from the filter inside the unit.



FILTER INSTRUCTIONS

1. Take off the back cover
2. Take out washable pre-filter and composite filter from the device, remove the packing bag of composite filter and re-insert both filters into the device, make sure the textile handle of composite filter is facing toward to back cover.
3. Take out the detachable power cable from accessory bag, connect power cable to the interface at device bottom.
4. Connect the device to power supply.

OPERATIONAL INSTRUCTIONS

1. After connecting to power supply, with an indicating tone, the device enters standby mode, there is a twinkle light on power button.

2. Power

By soft pressing the power button, the device will be turned on or off.

3. Mode Setting

By soft pressing the button of mode setting, the device will switch as followings:
A (Auto Mode) → T (Turbo Mode) → A (Auto Mode)

When working at A (Auto Mode), the device will choose the most suitable fan speed according to real-time air quality around it.

When working at top speed mode, it shows “T” on LED display panel, and the device operates at maximal effectiveness of purification.

Air Quality	Light Indicator	Fan Speed
Good	Green	Low
Moderate	Orange	Medium
Unhealthy	Red	High
Very Unhealthy	Flashing Red	Top

4. Timer

By soft pressing the timer button, you can set the running time of the device from 1 hour to 8 hours.

5. Sleep Mode

When working at sleep mode, it shows “S” on LED display panel, and the device operates at low fan speed and minimal noise.

6. Child Lock

Press the lock button on remote control to activate child lock function, or long press the same button for 5 seconds to unlock the device.

7. Speed

Press speed button to control the speed from 1 to 4 when it is under Normal mode.

8. ION/UV

When turning on the device, ion and UV function will be activated automatically, it shows "ION" and "UV" on LED display panel. Ion and UV function can be controlled by remote control separately. It is not suggested to turn on/off UV function frequently, which will affect the service life of UV component.

9. Filter life indicator and reset after changing filter

Remaining life time (purify percentage %) of current filter will be shown on LED display panel for few seconds as soon as turning on the device, or users can check it by short pressing the "reset" button on remote control as well.

Filter should be replaced when its life time showing 5% on panel screen . and the device (with a "di-di" buzzer sounds) will remind you replace the filter as well.

When turning on the device, either long press the "mode setting" button on device for 5 seconds, or long press the "reset" button on remote control, the purify percentage will restart to 100% (new filter).

WIFI

1. Download the "SmartLife" App (scan the below QR code) and install onto the user's smart-phone.



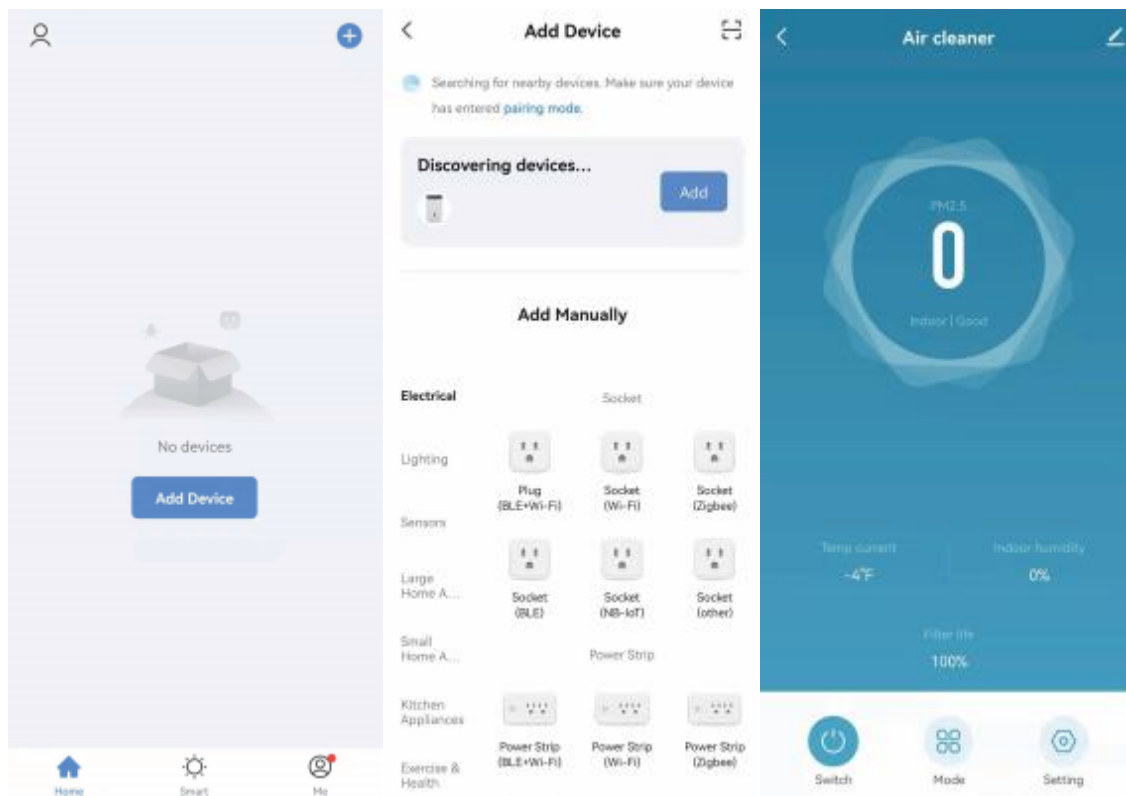
The app can also be downloaded on the following links

<https://e.tuya.com/smartlife>

<https://apps.apple.com/us/app/tuya-smart/id1034649547>

https://play.google.com/store/apps/details?id=com.tuya.smart&hl=en_ZA&gl=US

2. When turning on the device, long press the button of "Timer" for 5 seconds, with a warning buzzer sounds, Wifi function of the device is activated and Wifi icon flashes on LED display panel.
3. Connect the device with the specified application on your smartphone, Wifi icon will be lighten without flashing on LED display panel.



4. Turn on Bluetooth, click "Add Device" on the application
5. Select the desired air purifier from found devices
6. Connect successfully

Cleaning

Note: Never use abrasive, aggressive, or flammable cleaning agents such as bleach or alcohol to clean any part of the appliance.

Cleaning the body of the air purifier

Regularly clean the inside and outside of the air purifier to prevent dust from collecting.

- 1 Use a soft, dry cloth to clean both the interior and exterior of the air purifier.
- 2 The air outlet can also be cleaned with a dry, soft cloth.

Cleaning the air quality sensor

Clean the air quality sensor every two months for optimal functioning of the appliance.

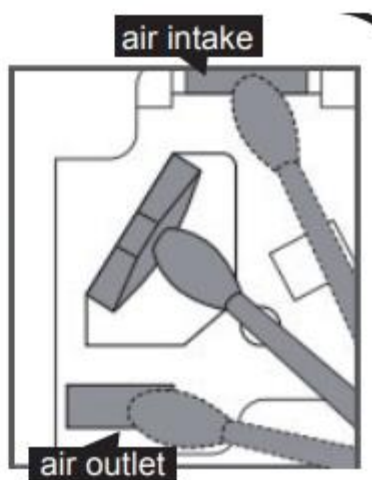
Note:

- If the air purifier is used in a dusty environment, it may need to be cleaned more often.
- If the humidity level in the room is very high, condensation may develop on the air quality sensor and the air quality light may indicate a poorer air quality even though the air quality is actually good. If this occurs, clean the air quality sensor or use the air purifier on a manual speed setting.

Clean the sensor

Use wet cotton swabs to clean the dusts on the sensor, on the air intake and the air outlet. Use dry cotton swabs to clean the water remained on the sensor.

Do the cleaning at least once every 2 months to ensure the efficiency of this machine.



Note: if you use a high power/ industrial vacuum cleaner, it may damage the filter.

TROUBLE SHOOTING

Phenomenon	Reason & Solution
The airflow that comes out of the air outlet is significantly weaker than before.	The surface of the filter is dirty. Clean the surface of the filter (see the cleaning instructions for filter).
The air quality does not improve, even though the appliance has been operating for a long time.	<ul style="list-style-type: none"> • Check if the packing material is removed from the filter. • Make sure that the filter is properly installed. • The air quality sensor is dirty or wet. Clean the air quality sensor • Room size is large or the outdoor air quality is poor. For optimum purification performance, please close the doors and windows when operating the air purifier. • There are indoor pollution resources. For instances, smoking, cooking, incense. • Filter reaches the end of life. Replace the filter with a new one.
The appliance produces a strange smell.	<p>Please ensure you have removed the plastic over the HEPA filter. The first few times you use the appliance, it may produce a plastic smell. This is normal. However, if the appliance produces a burnt smell even if removing the filter, contact us at www.gmcaircon.com or 012-661-1173.</p> <p>The filter may produce smell after being used for a while because of the absorption of indoor gases. It's recommended that you reactivate the filter by putting it in direct sunlight for repeated use. If odor still exists, replace the filter.</p>
Three gear indicator lights up at the same time	There is a machine malfunction. Please cut off the power immediately and contact us on 012-661-1173 or www.gmcaircon.com
E1	Please ensure all sensors have been cleaned on the air

	purifier. If the problem still persists please contact us on 012-661-1173 or www.gmcaircon.com
The appliance is extra loud.	<ul style="list-style-type: none"> • Check if the packing of the filter is removed. • The appliance will run in high speed when the air quality is poor, which will cause higher noises. When using the appliance in a bedroom at night, choose the Sleep speed. • if anything drops into air outlet, it may also cause abnormal loud sounds. Immediate turn off appliance, turn appliance upside down, to get foreign objectives out of appliance.
The appliance still indicates that I need to replace a filter, but I already did.	Perhaps you did not reset the filter lifetime counter. Switch on the appliance. If the filter has been replaced, the filter change indicator must be reset again. long press the POWER button for 5 seconds to reset the air purifier.
The device cannot be switched on:	<ul style="list-style-type: none"> •Is the plug inserted correctly? •Has the fuse blown or is there no voltage at the socket? •Is the front cover fitted correctly?
E2	•Odor malfunction. – Please reboot the unit. If the problem persists please contact us on 012-661-1173 or www.gmcaircon.com

SERVICE AND WARRANTY

GMC Airconditioning CC was established in 1995 and is one of South Africa's leading cooling and heating companies. We pride ourselves on 100% customer satisfaction and have the highest online rating of all heating and cooling companies in South Africa. We will strive to ensure you are 100% satisfied with your product.

In the rare case of encountering any issues with your product or would like some support please contact us directly on 012-661-1173 or www.gmcaircon.co.za as this will allow us to react quickly to your request. If you have bought this product from one of our partner platforms, then contacting us directly will allow us to resolve the issue for you in a timelier fashion. We are here to help you and ensure you are 100% satisfied.

Please read this instruction manual carefully before setting up or using this product. If you believe this product to be suffering from a manufacturing fault, or if you have any inquiries about this product, please contact our customer support.

CUSTOMER SUPPORT

GMC Airconditioning CC

35 Sarel Baard Crescent
Gateway Industrial Park
Centurion
0046

Telephone: +27 (12) 661-1173

Website: www.gmcaircon.co.za

Email: info@gmcaircon.com

When contacting our customer support, please have the information below available. All warranty requests must be accompanied by a proof of purchase, which is a copy of the original receipt.

Model:

Date of purchase:

Purchased from: